

Company Introduction

Apartech Limited provide software tools and consulting solutions for IBM Websphere platforms and ANT scripting tools. Apartech are specialist in configuration and environment management solutions. Apartech are working with Panacea Workflow Systems, who were established in 1997, with 250 customers worldwide and are specialist in migration, comparison tools for multiple platforms.

The Aura Suite for IBM Websphere

The new Apartech Aura suite for IBM Websphere consists of a set of products for comparing, automating and deploying Websphere changes. Using a tool to manage your Websphere environments has huge business benefits.

Business Benefits

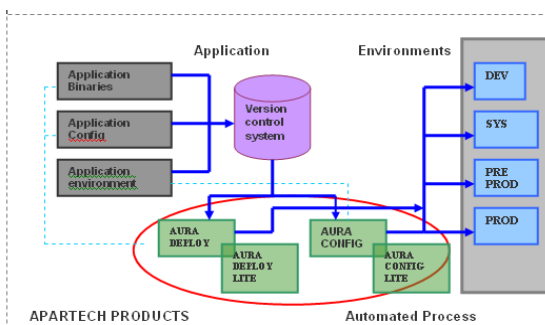
Overall a return on investment can be seen within days of using the tool :

- Saves money and development time by automating common manual admin tasks
- Ensures complex migration procedures are performed correctly and safely every time
- Less downtime, less errors and consequently less cost to the business by managing application deployments
- Schedule and automate deployments out of hours to free up developer time and reduce cost
- Ensure an audit trail of changes during a deployment
- Control your development environment through managed applications

Product Set

The Aura suite is split into components to allow an easy entry point into the product set.

- Aura Config Lite
- Aura Deploy Lite
- Aura Config
- Aura Deploy
- Aura Enterprise
- Aura For BMC ITSM



Key Features

- Deployment process management for J2EE Applications on IBM WebSphere Application
- Compare and automate the configuration changes on WebSphere Application Server/WebSphere Process Server environment
- Support for all major resource types e.g. Datasource, security, JMS, EAR, WAR etc

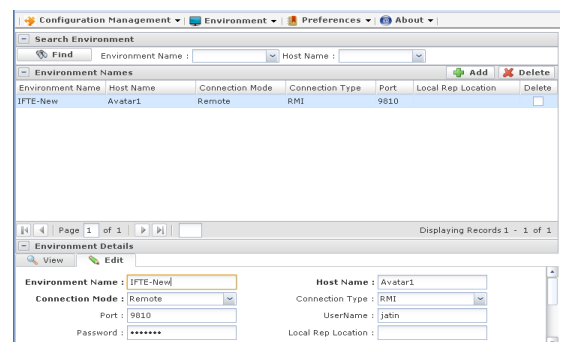
Aura Deploy and Aura Config are separate products. Aura Deploy manages application deployment and application level configurations whilst Aura Config manages environment configuration with a powerful compare feature. Both products compliment each other and deliver complete deployment and change automation solution when used in combination. Lite editions of these products gives an easy entry point.

Aura Config Lite

Aura Config lite is a command based configuration migration and comparison tool. Aura config supports management and comparison of all major WebSphere resource e.g. Server Cluster, Node, Security, Datasource, SIB, JMS, Namespaces etc. XML config file based with ANT/shell interface.

Aura Config

Aura Config utilises the same migration and comparison tool functionality in Lite but it comes wrapped in a rich User Interface. This allows you to easily manage your environments as per the screen shot below :



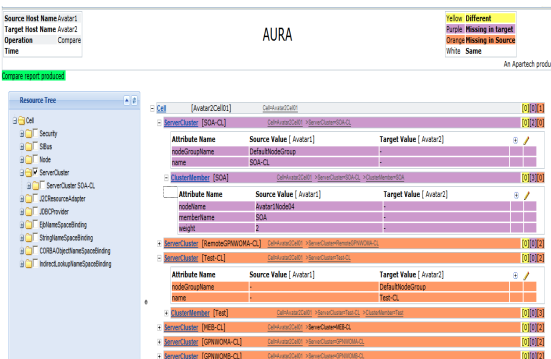
It allows you to compare, manage and migrate with click of a button and includes reporting for differences. All the configuration resource mentioned in Aura Config lite are supported in Aura Config with intuitive user interface.

Aura Deploy Lite

Aura Deploy Lite is a command based application migration tool. Deploy, update, export EAR/WAR with consistent application configurations. All major application configurations are supported e.g. EJB JNDI, resource and ejb reference mapping, security role mapping, web services client binding, webserver and clusterserver mapping, starting weight, libraries mapping

Aura Deploy

The forthcoming release utilises the same functionality in Deploy Lite. Aura deploy has a rich interface to manage the application configuration like shared lib mapping, starting weight, JNDI mapping, webservices mapping etc. Aura Deploy allows users to manage these configurations centrally. Aura Deploy's feature of scheduling deployment allows user to schedule out of hours deployment unattended. Rich dashboards provide users with detailed deployment status.

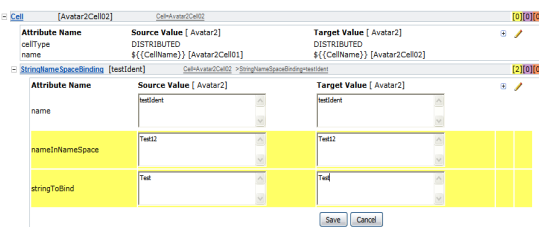


Aura Enterprise

The forthcoming release is a fully featured version of Aura, complete with Deploy, Config, Versioning and Change Control. This version extends existing functionality within the AURA suite allowing the user to archive configurations and get daily reports of changes in the environment.

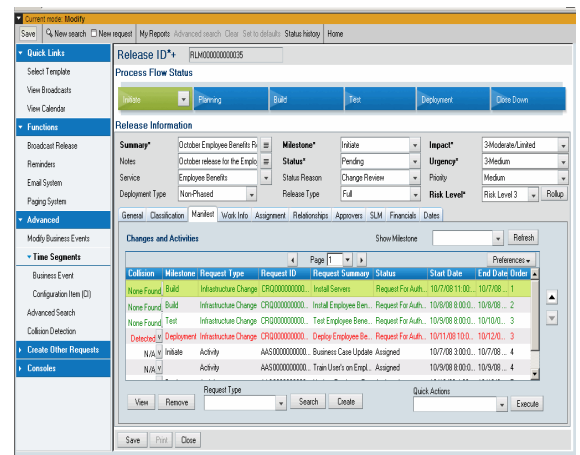
WebSphere Supported Versions

The Aura suite supports WebSphere Application Server versions 5.x, 6.x, 7 and WebSphere Process Server 6.x.



Aura for BMC ITSM

We provide an integration point to manage deployments using Aura directly from BMC Remedy ITSM Change Management. This allows users to schedule Changes in the Change Management tool and the tool will automatically invoke the Change at the scheduled time. Successful deployments can automatically close the Change Request. Compatible with BMC Remedy ITSM v6,7,7.5 & 7.6.



Apartech Services

ANT Training

In addition to the Aura Product Suite Apartech also offer ANT Training. This two day training course which can be held at customer site is designed for delegates that have little or no knowledge of ANT. Delegates will get hands on experience of installing ANT, writing, designing and debugging ANT scripts.

Professional Services

Apartech also offer professional services for your WebSphere managed environments

- Apartech WebSphere specialist consultants can help you define and streamline your WebSphere change and deployment process with Aura product set and strong expertise in defining team structures.
- Apartech WebSphere consultants can help with WebSphere version migration projects.
- Apartech WebSphere consultants can help a WebSphere greenfield site with architecture design, environment design and product selection process.

Contact Us

Tel: +44 (0) 1784 497 047

Email : sales@pws-europe.com

Website : www.pws-europe.com

Email : sales@apartech.co.uk

WebSite www.apartech.co.uk